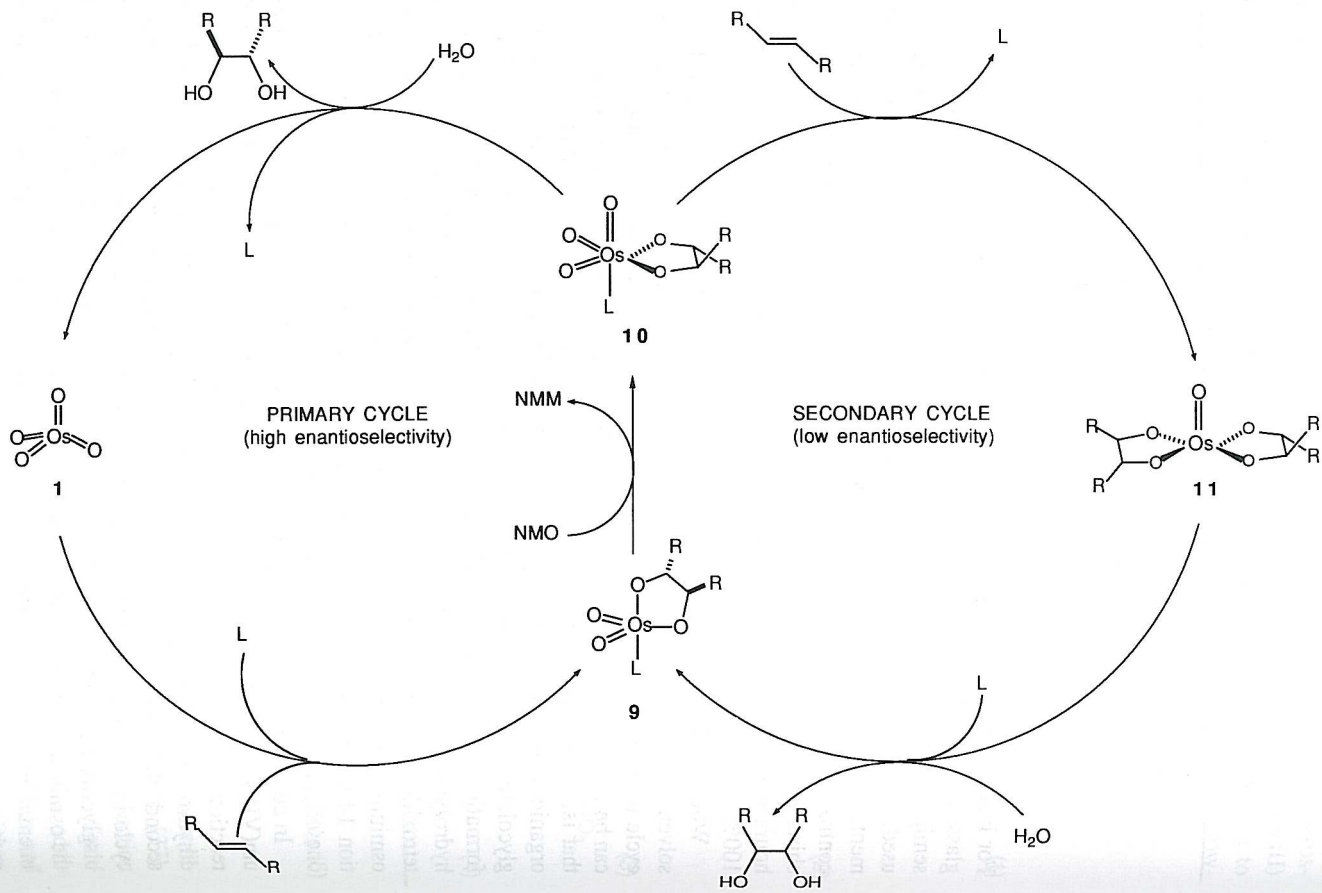
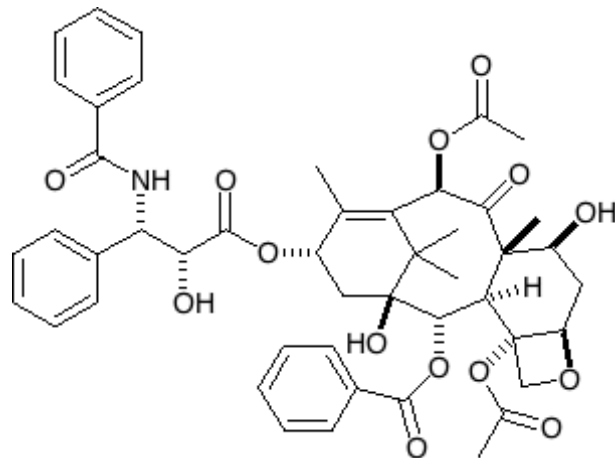
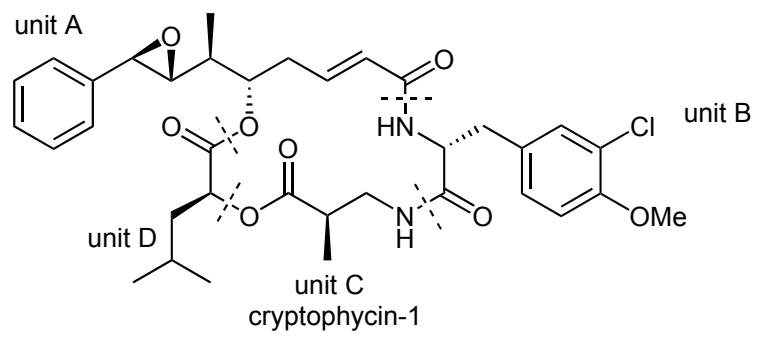
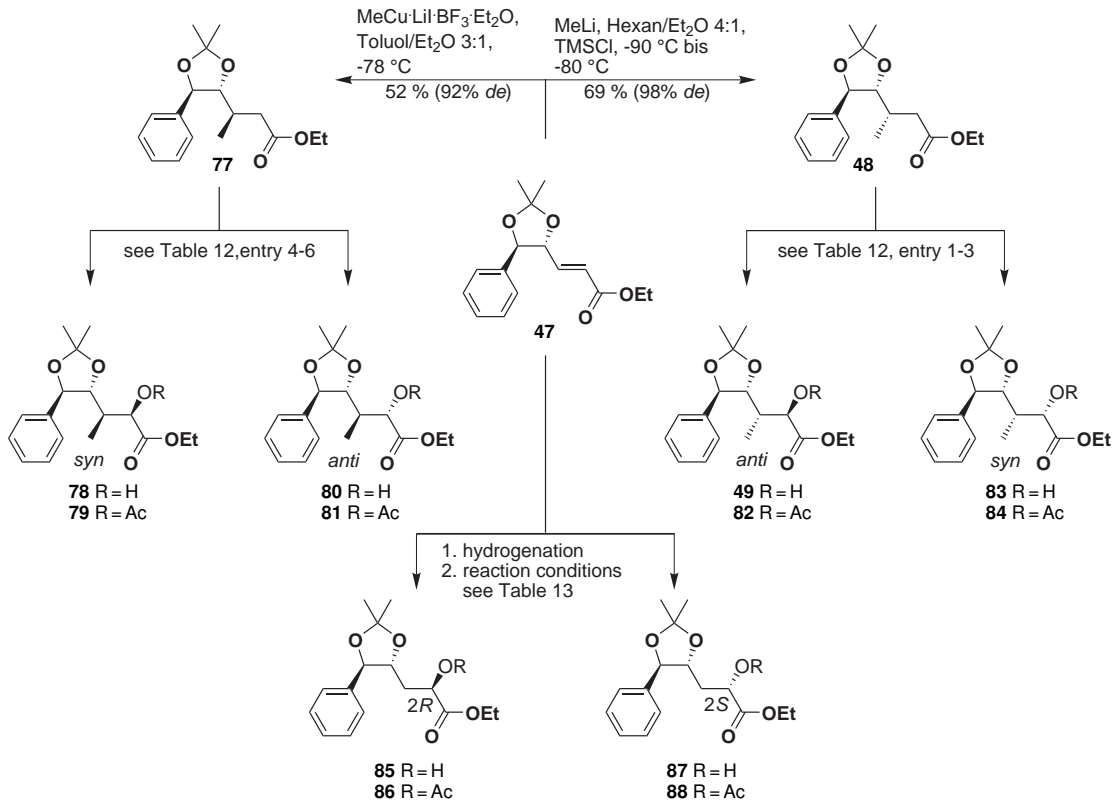
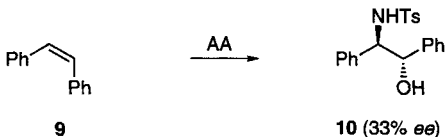
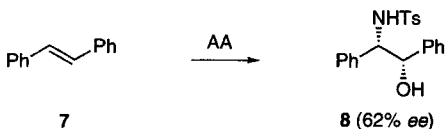
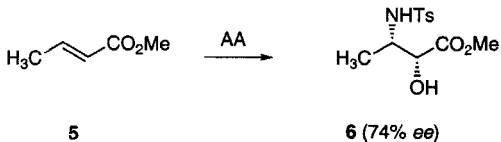
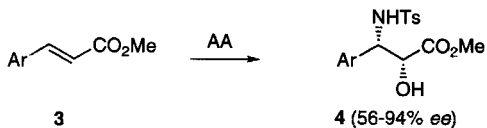
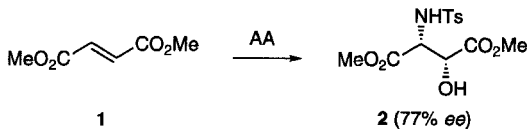


**Figure 2** Enantioselectivity mnemonic scheme.









Schema 1. AA: TsNCINa (3.5 Äquiv.), *t*BuOH/H<sub>2</sub>O 1/1 oder CH<sub>3</sub>CN/H<sub>2</sub>O 1/1, Raumtemperatur, K<sub>2</sub>[OsO<sub>2</sub>(OH)<sub>4</sub>] (4 Mol-%), (DHQD)<sub>2</sub>PHAL (5 Mol-%); (DHQD)<sub>2</sub>PHAL führt zu den enantiomeren Produkten.