



LAPIN YLIOPISTO
UNIVERSITY OF LAPLAND

BLENDED INTENSIVE PROGRAMME

29.9.-3.10.2025

ROVANIEMI, FINLAND

BRIDGING GENERATIONS

-

STRENGTHENING COLLABORATION ACROSS AGES

REGISTER NOW



<https://link.webropol.com/s/BIPRovaniemi2025>

Registration deadline: 11 August 2025



What is this BIP about?

Within this blended intensive program, you will engage with participants from diverse backgrounds in a five-day exploration of intergenerational dynamics in the workplace. Our goal is to deepen our understanding of how different generations interact, communicate, and collaborate in professional environments.

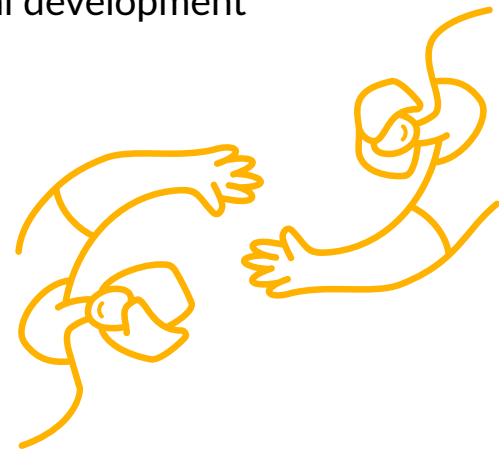
By sharing insights and best practices, we will explore strategies that foster a work culture where generational diversity becomes a strength rather than a challenge. In addition, throughout the week, we will immerse ourselves in Finnish culture, experience the unique nature of Lapland, and gain deeper insights into the local way of life.

Organisers of this BIP:

The Education and Development Services unit at the University of Lapland is a specialist organisation engaged in lifelong learning and development activities. We offer collaboration enabling lifelong learning and development of expertise. We are known for our reliable and efficient project activities and for our expertise in the implementation of regional, national, and international education.

Our core competences are:

- Enhancement of vocational and career management skills
- Development of work communities and organisations
- Planning and facilitation of education and training
- Preparation, implementation, and management of regional development projects





Week's programme

Location: University of Lapland (except Wed)

Day 1



10.00-15.00

- Welcome and orientation
 - Optional: get-together dinner at 18.00 (own expense)
-

Day 2



10.00-15.00

- Generational based knowledge, skills and interaction
-

Day 3



12.00-20.00

- Get to know Rovaniemi: Visit to Arktikum, Santa Claus Village and dinner
-

Day 4



10.00-15.00

- Bridging generations with leadership
-

Day 5



10.00-13.00
(15.00)

- Summary of the week
 - Partnership discussions (optional 13-15)
-



Exploring the city

During the week, we offer you the opportunity to explore the city of Rovaniemi in many ways. Some of the activities are included in the programme (mentioned below, registration needed), but the city of Rovaniemi offers you many activities that you can explore by yourself outside of the programme.

Get-together dinner (optional) / Monday 29.9.

On Monday evening, at 18.00 we'll organise an unofficial get-together meeting in a restaurant that is located in the middle of the city. Join us for dinner or drinks!

Registration needed - please note that this cost is not included in the price.

Rovaniemi activities / Wednesday 1.10.

On Wednesday, we'll explore the city together! First, we'll visit **Arktikum**. Arktikum is a science centre and museum, which brings northern nature, cultures and history close to you.

Later on, we'll pay a visit to **Santa Claus Village**, where the Santa Claus himself has his office. The village is located in the Arctic Circle (bus transportation organised). In the village, you can experience the magic of Christmas every day of the year, visit Santa Claus, explore souvenir shops and cross the magical Arctic Circle.

After the activities, we will have a **dinner** together in downtown of Rovaniemi.

Registration needed - these activities are included in the price.


Optional activities - no registration needed

There are lots of other things to do in Rovaniemi, and you can explore them on your own time. We will offer you a map where you can find ways for exploring the city - free of charge.

Find more things to do: visitrovaniemi.fi.



Practical information

- For whom?** This BIP is for people who are working with lifelong learning, working life development issues in HEI's, especially in units just like us (see page 2).
- To participate, you need to have your mobility connected to our BIP ID in the Beneficiary Module (Erasmus + Staff training). Participants who register their mobility in the beneficiary module need to come from an institution that has an Erasmus+ charter AND need to have an Erasmus+ funded mobility available to participate. If not, a fee of 400€ is applicable.
- Number of participants: min. 12 - max. 20. We take participants on a first-come, first-served basis.
- When?** Intensive week: 29.9.-3.10.2025
Online component: 10.9.2025 at 11.00-12.00 (CET).
- Where?** Most of the programme is organised at the University of Lapland, Yliopistonkatu 8, 96300 Rovaniemi, Finland. A more detailed programme will be sent to the participants before the BIP week.
- How to apply?** Apply by filling in the following form:
<https://link.webropol.com/s/BIPRovaniemi2025>
- 
- Deadline for applications is Monday 11.8.2025.
- Admission will be confirmed for all applicants no later than week 33.
- Please note!** The BIP participation fee covers only the programme as well as the social/cultural activities mentioned in this brochure. Other activities are at one's own expense.
- Lunches (Mon-Fri) and dinner on Wednesday are covered by the programme.
- Participants are responsible for their own **transportation** to and within Rovaniemi and **accommodation arrangements**. It is advisable to book your accommodation well in advance - the autumn can be busy in Rovaniemi! Find more information of how to get here and the hotels from [Visit Rovaniemi](#).
- Due to the interactive nature of our programme, we require participants to have an English level of at least C1 according to the CERF.
- Questions?** Contact: Katri Kuusela katri.kuusela@ulapland.fi (Please note the holiday season in July, but we will contact you as soon as possible).